

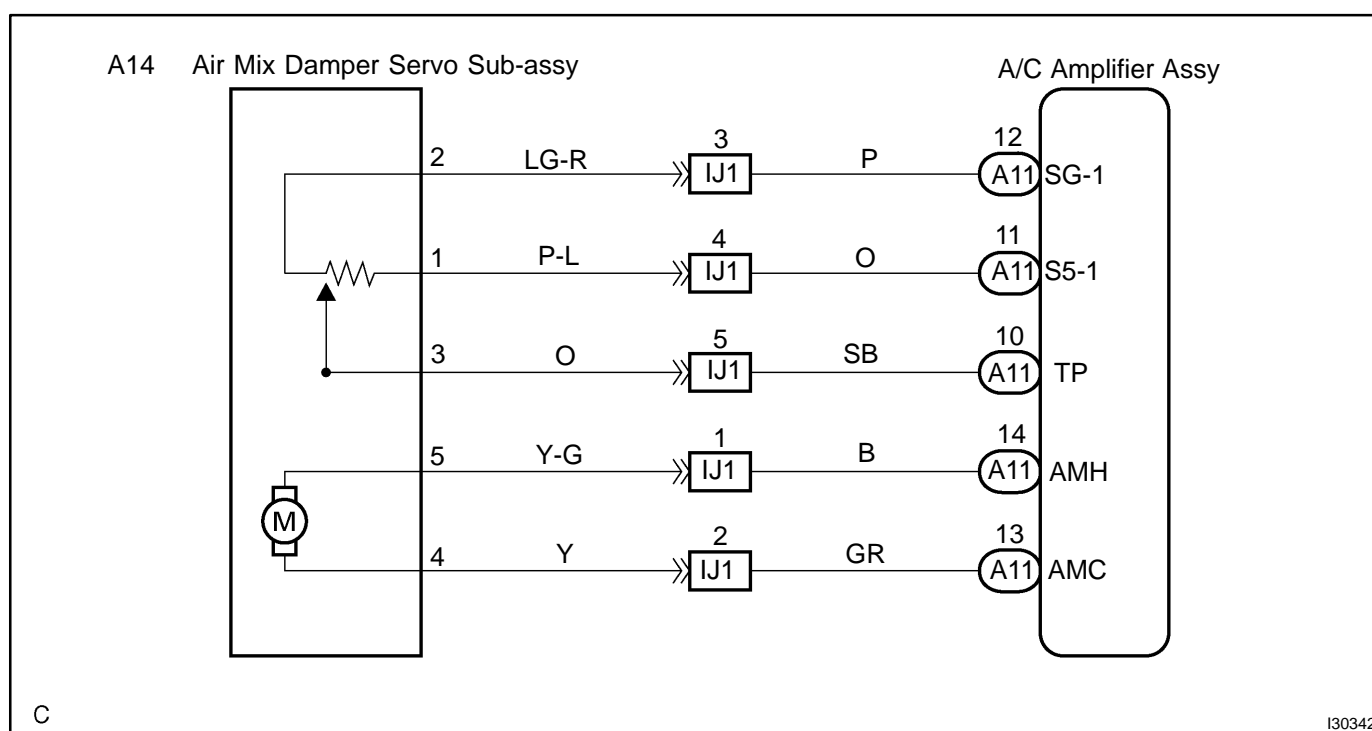
DTC	B1441/41	AIR MIX DAMPER CONTROL SERVOMOTOR CIRCUIT (PASSENGER SIDE)
------------	-----------------	---

CIRCUIT DESCRIPTION

This air mix damper servo sub-assy is controlled by the A/C amplifier assy and moves the air mix damper servo sub-assy to the desired position.

DTC No.	Detection Item	Trouble Area
B1441/41	Air mix damper position sensor value does not change even if A/C amplifier assy operates air mix damper servo sub-assy.	<ul style="list-style-type: none"> • Air mix damper servo sub-assy • Harness or connector between air mix damper servo sub-assy and A/C amplifier assy • A/C amplifier assy

WIRING DIAGRAM



INSPECTION PROCEDURE

1 PERFORM ACTUATOR CHECK

- (a) Set to actuator check mode (see page 05-1 117).
- (b) Press the DEF switch and change to step operation.
- (c) Check the air flow temperature by hand.

Display Code	Air Mix Damper Operation
0	COOL side (-5 % open)
1	COOL side (-5 % open)
2	COOL side (-5 % open)
3	COOL side (-5 % open)
4	COOL/WARM (50 % open)
5	COOL/WARM (50 % open)
6	WARM side (105 % open)
7	WARM side (105 % open)
8	WARM side (105 % open)
9	WARM side (105 % open)

OK:

Air flow temperature changes in accordance with each display code.

Result:

NG	A
OK (Checking from the PROBLEM SYMPTOMS TABLE)	B
OK (Checking from the DTC)	C

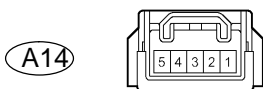
B

PROCEED TO NEXT CIRCUIT INSPECTION SHOWN IN PROBLEM SYMPTOMS TABLE (SEE PAGE 05-1 129)

C

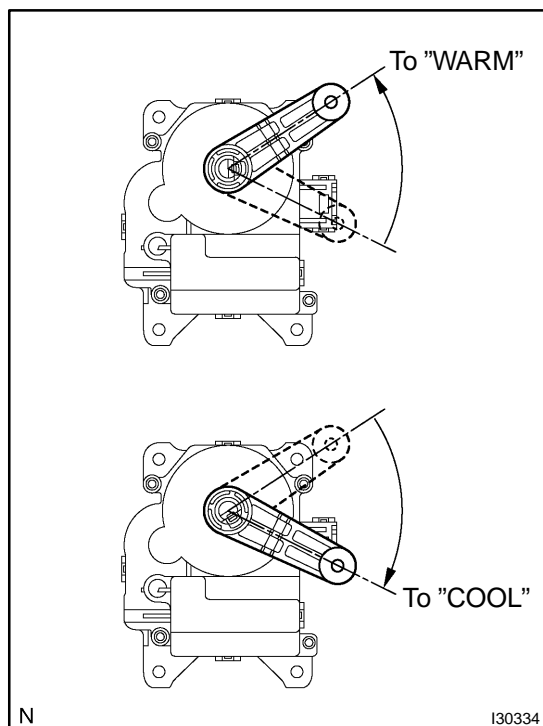
REPLACE AIRCONDITIONER AMPLIFIER ASSY

A

2 INSPECT AIRMIX DAMPER SERVO SUB-ASSY**Air Mix Damper Servo Sub-assy
Connector Wire Harness View:**

I30157

- (a) Remove the air mix damper servo sub-assy.
- (b) Connect the positive (+) lead from the battery to terminal 4 and negative (-) lead to terminal 5, then check that the lever turns to "COOL" side smoothly.
- (c) Connect the positive (+) lead from the battery to terminal 5 and negative (-) lead to terminal 4, then check that the lever turns to "WARM" side smoothly.



N

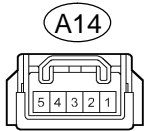
I30334

NG**REPLACE AIRMIX DAMPER SERVO SUB-ASSY****OK**

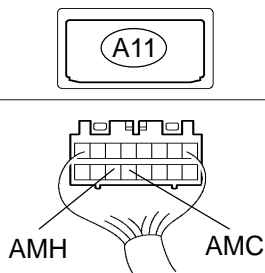
3

CHECK HARNESS AND CONNECTOR(AIR MIX DAMPER SERVO SUB-ASSY - A/C AMPLIFIER ASSY)

Air Mix Damper Servo Sub-assy
Connector Wire Harness View:



A/C Amplifier Connector
Wire Harness View:



I41014

(a) Measure the resistance according to the value(s) in the table below.

Standard:

Tester connection	Condition	Specified condition
A11-13 (AMC) - A14-4	Always	Below 1 Ω
A11-14 (AMH) - A14-5	Always	Below 1 Ω
A11-13 (AMC) - Body ground	Always	10 k Ω or higher
A11-14 (AMH) - Body ground	Always	10 k Ω or higher

NG

REPAIR OR REPLACE HARNESS OR CONNECTOR

OK

REPLACE AIRCONDITIONER AMPLIFIER ASSY