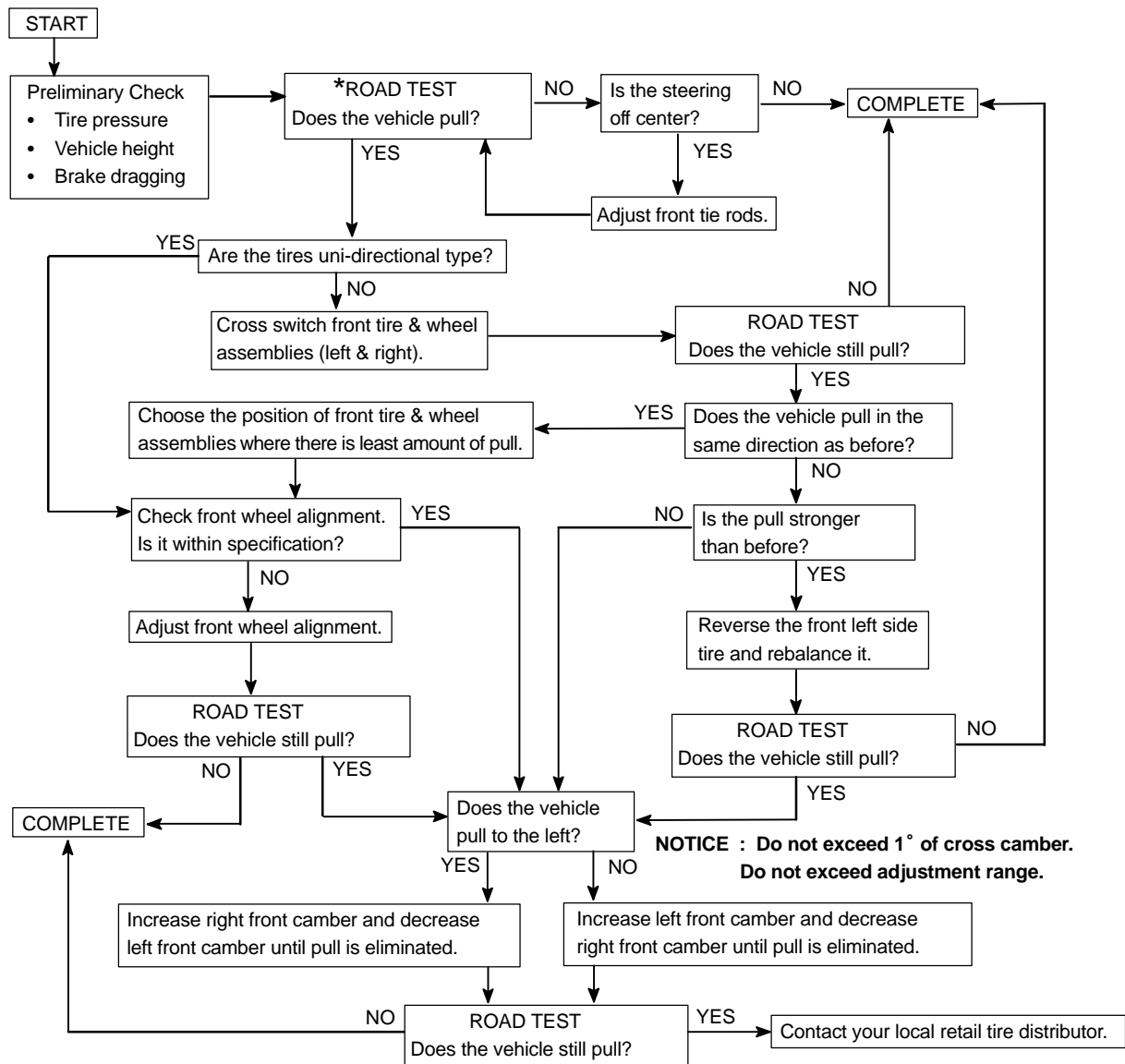


# HOW TO PROCEED WITH TROUBLESHOOTING

## HINT:

This is the repair procedure for vehicle pull.



\*Select a flat road where the vehicle can be driven in a straight line for 100 meters at a constant speed of 56km/h (35mph). Please confirm safety and set the steering wheel straight ahead. Drive the vehicle in a straight line for 100 meters at a constant speed of 56km/h (35mph) without holding the steering wheel.

(1) The vehicle can keep straight but the steering wheel has some angle.

————→STEERING OFF CENTER (See page 50-4)

(2) The vehicle cannot keep straight.

————→VEHICLE PULL