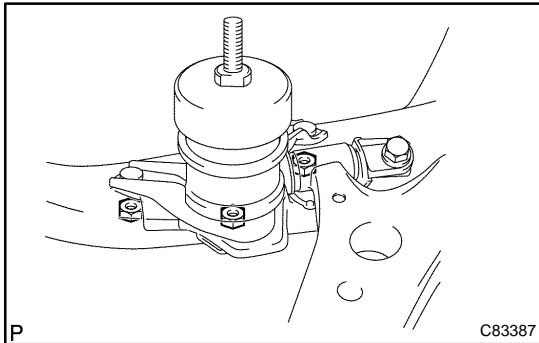


FRONT SUSPENSION ARM SUB-ASSY LOWER NO.1 LH REPLACEMENT

260HA-02

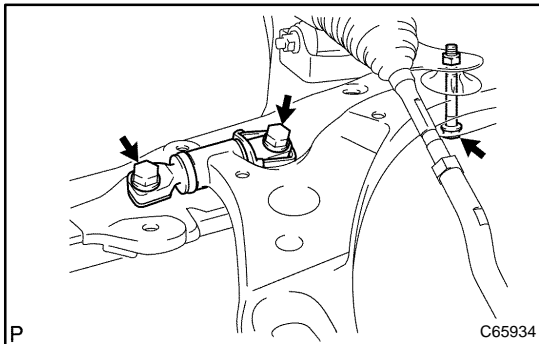
HINT:

- COMPONENTS: See page 26-3 .
 - Use the same procedures for the RH side and LH side.
 - The procedures listed below are for the LH side.
1. **REMOVE ENGINE ASSEMBLY WITH TRANSAXLE (3MZ-FE ENGINE TYPE)
(SEE PAGE 14-149)**
 2. **REMOVE ENGINE ASSEMBLY WITH TRANSAXLE (2AZ-FE ENGINE TYPE)
(SEE PAGE 14-24)**



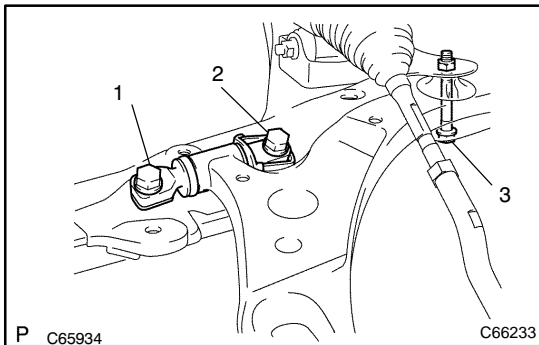
3. REMOVE TRANSVERSE ENGINE MOUNTING INSULATOR

- (a) Remove the 3 nuts and the transverse engine mounting insulator.



4. REMOVE FRONT SUSPENSION ARM SUB- ASSY LOWER NO.1 LH

- (a) Remove the 3 bolts and the nut on the suspension arm lower No.1 LH and remove it from the front frame assy.
- (b) Remove the front lower arm bush stopper.



5. INSTALL FRONT SUSPENSION ARM SUB- ASSY LOWER NO.1 LH

- (a) Install the front lower arm bush stopper.
- (b) Install the suspension arm lower No.1 LH to the front frame assy with the 3 bolts and the nut.
- (c) Tighten the 3 bolts in numerical order as shown in the illustration.

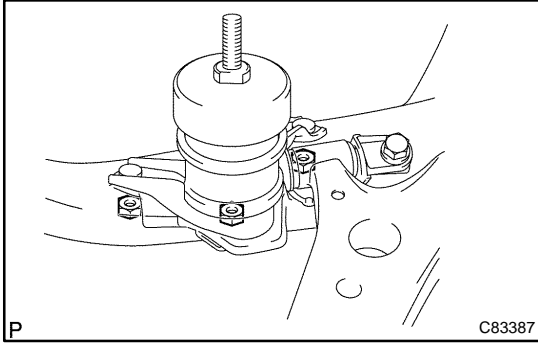
Torque:

(bolt 1, 2) 200 N·m (2,040 kgf·cm, 148 ft·lbf)

(bolt 3) 206 N·m (2,100 kgf·cm, 152 ft·lbf)

HINT:

Start tightening the bolts from the front side of the vehicle.



6. INSTALL TRANSVERSE ENGINE MOUNTING INSULATOR

- (a) Install the transverse engine mounting insulator with the 3 nuts.

Torque: 87 N·m (887 kgf·cm, 64 ft·lbf)

7. INSTALL ENGINE ASSEMBLY WITH TRANSAXLE (3MZ-FE ENGINE TYPE) (SEE PAGE [14-149](#))

8. INSTALL ENGINE ASSEMBLY WITH TRANSAXLE (2AZ-FE ENGINE TYPE) (SEE PAGE [14-24](#))