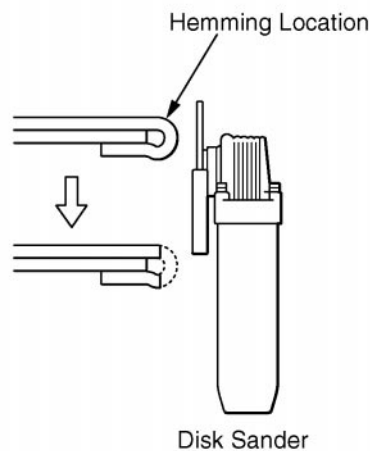
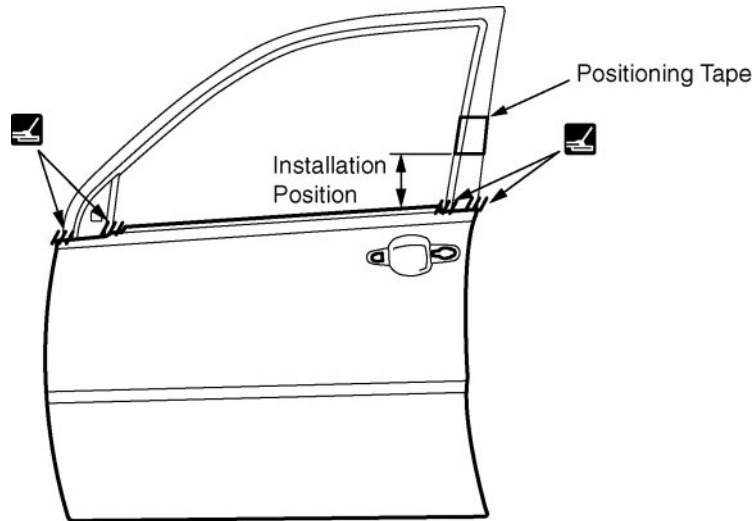


FRONT DOOR OUTER PANEL (ASSY)**REPLACEMENT**

F16766A

REMOVAL

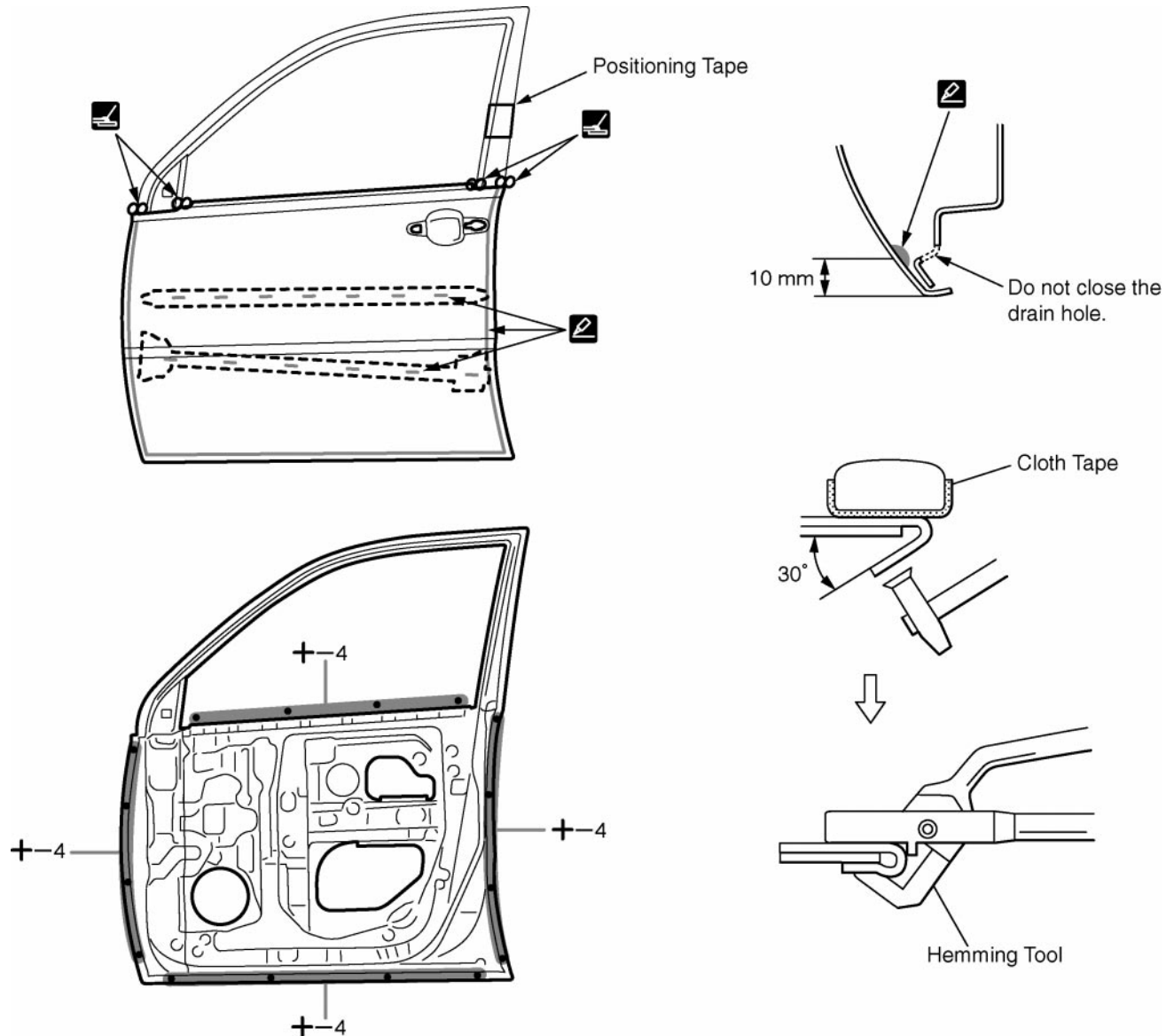
F16766

POINT

- 1 Before removing the outer panel, make the installation position with a tape.
- 2 Before removing the outer panel, establish its exact position in relation to the window frame using a reference marker, etc.
- 3 After grinding off the hemming location, remove the outer panel.

INSTALLATION

- Temporarily install the new parts and measure each part of the new parts in accordance with the body dimension diagram. (See the body dimension diagram)
- Inspect the fitting of the related parts around the new parts before welding. This affects the appearance of the finish.
- After welding, apply the polyurethane foam to the corresponding parts.
- After welding, apply body sealer and under-coating to the corresponding parts.
- After applying the top coat layer, apply anti-rust agent to the inside of the necked section structural weld spots.



F16767

POINT

- 1 Before temporarily installing the new parts, apply body sealer to the reinforcement, side impact protection beam and back side of the new parts.
HINT:
 - 1) Apply sealer evenly about 10 mm (0.39 in.) from the flange and 3 mm (0.12 in.) in diameter to the outer panel and apply just enough sealer for the reinforcement and side impact protection beam to make contact.
- 2 Bend the flange hem about 30° with a hammer and dolly, then fasten tightly with a hemming tool.
HINT:
 - 1) Perform hemming in three steps, being careful not to warp the panel.
 - 2) If a hemming tool cannot be used, hem with a hammer and dolly.