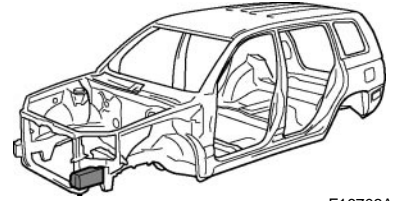


FRONT SIDE MEMBER (CUT-P)

REPLACEMENT

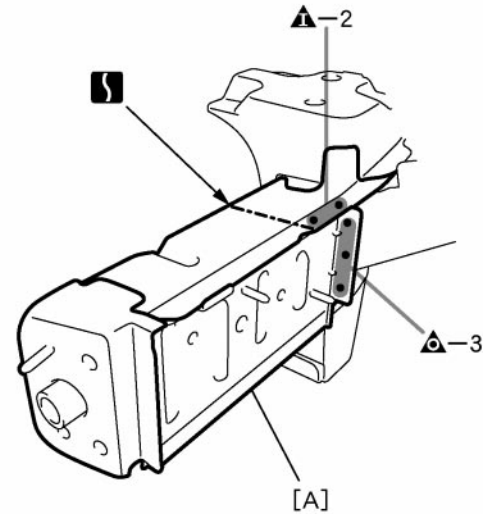
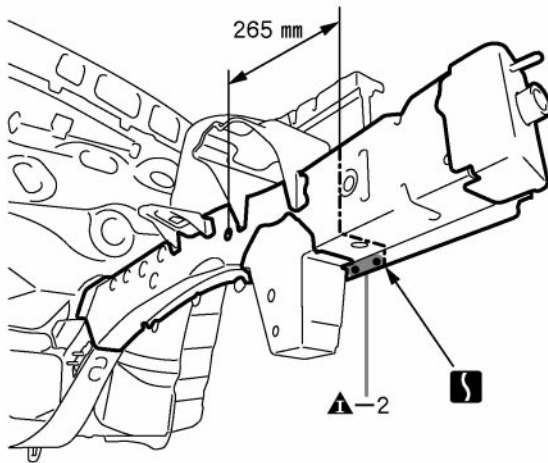
With the front crossmember No.1 reinforcement removed.



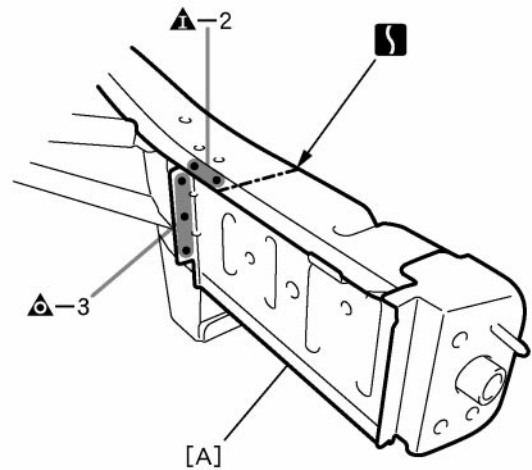
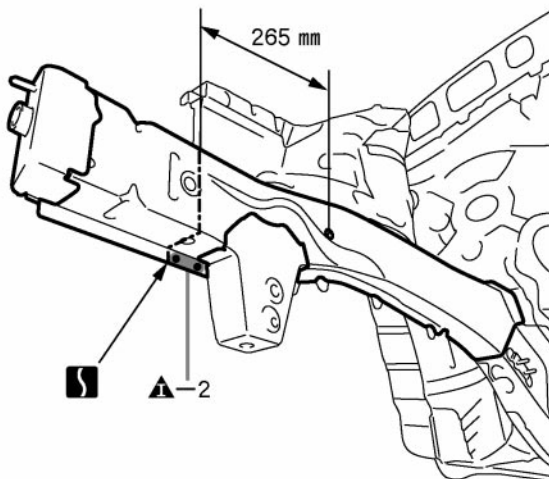
F16703A

REMOVAL

[LH]



[RH]



F16703

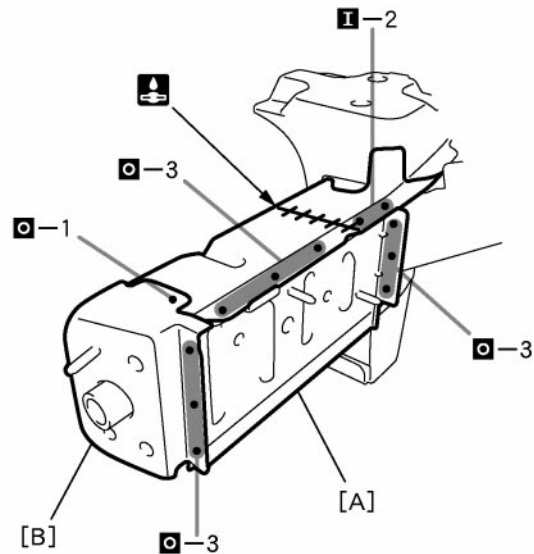
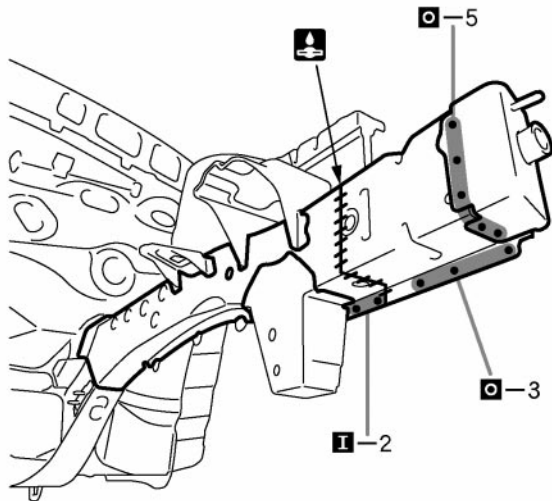
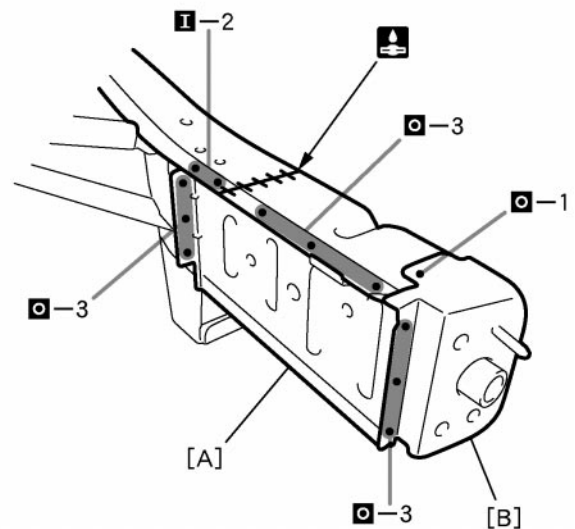
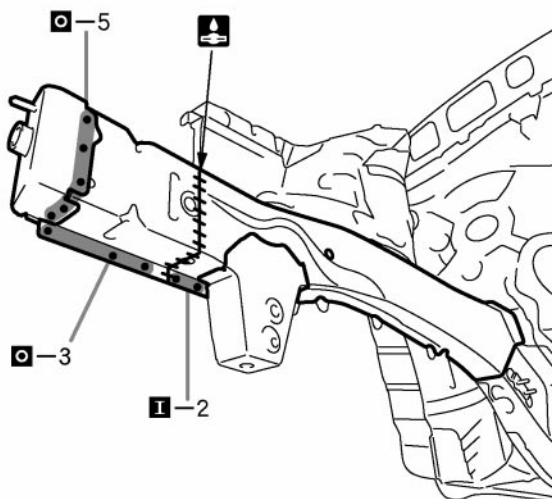
PART NAME

[A] Front Side Member Extension

265 mm (10.43 in.)

INSTALLATION

- Temporarily install the new parts and measure each part of the new parts in accordance with the body dimension diagram. (See the body dimension diagram)
- Inspect the fitting of the related parts around the new parts before welding. This affects the appearance of the finish.
- After welding, apply the polyurethane foam to the corresponding parts.
- After welding, apply body sealer and under-coating to the corresponding parts.
- After applying the top coat layer, apply anti-rust agent to the inside of the necked section structural weld spots.

[LH]**[RH]**

F16704

PART NAME

[A] Front Side Member Extension

[B] Body Mounting No.1 Bracket