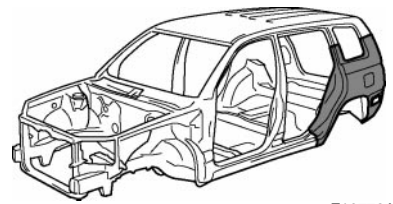
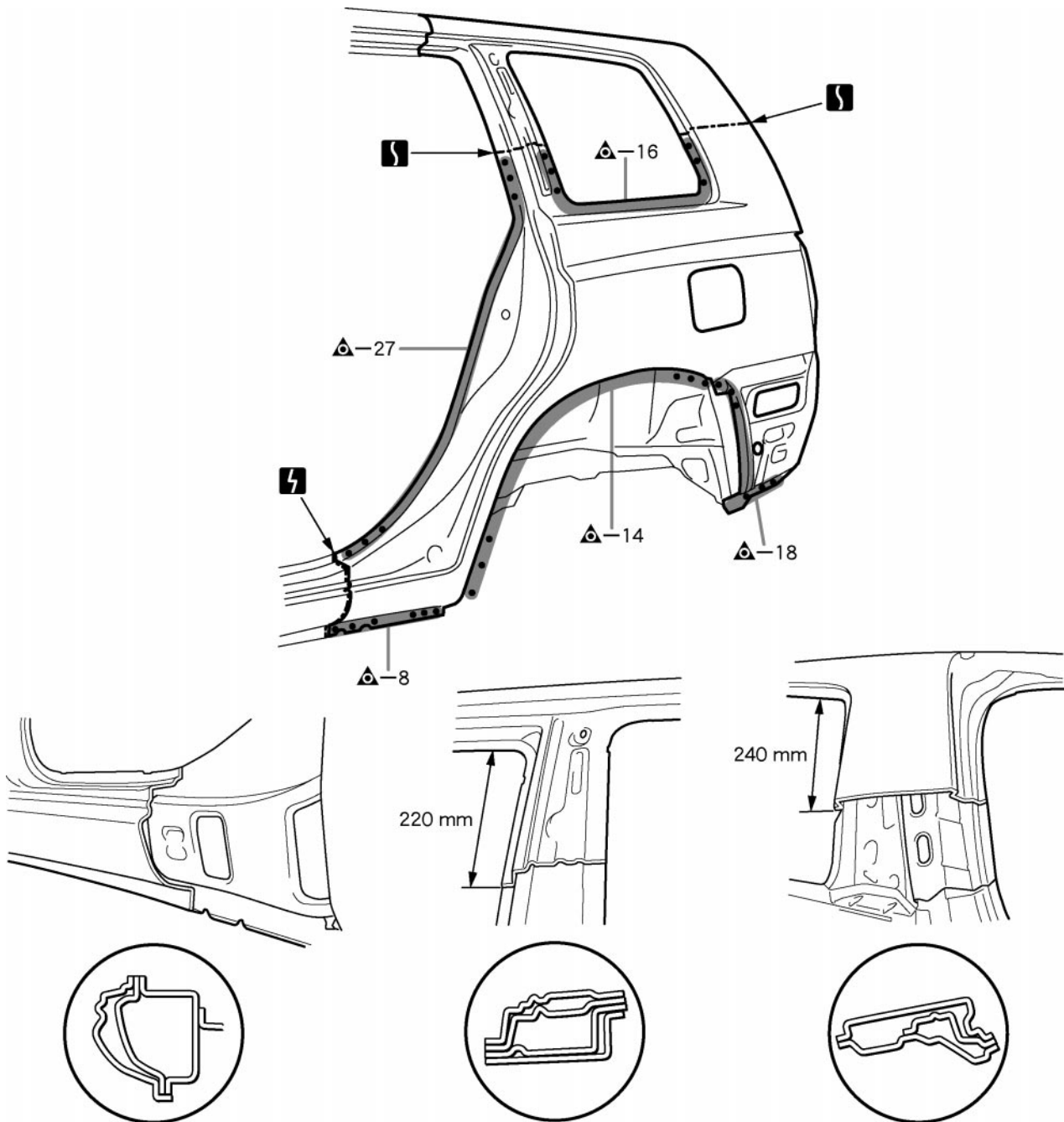


QUARTER PANEL (CUT)**REPLACEMENT**

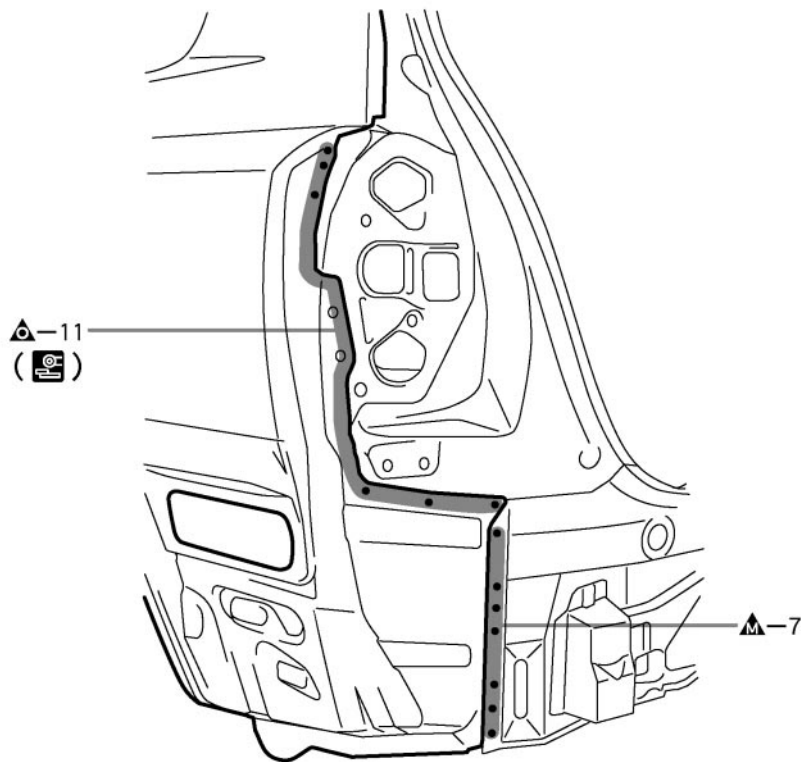
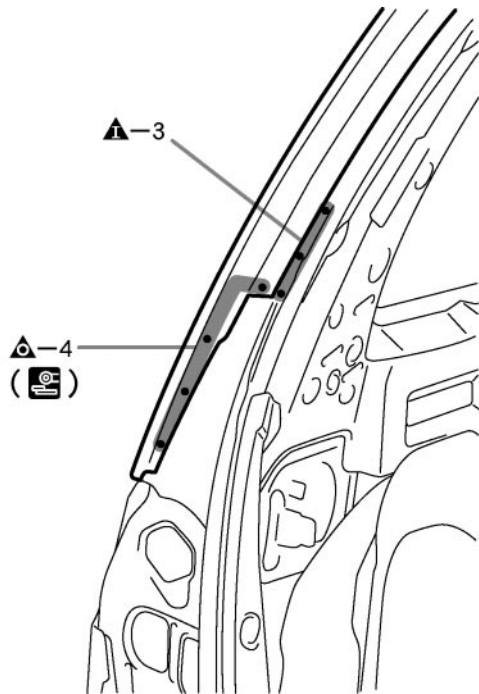
F16772A

REMOVAL

F16772

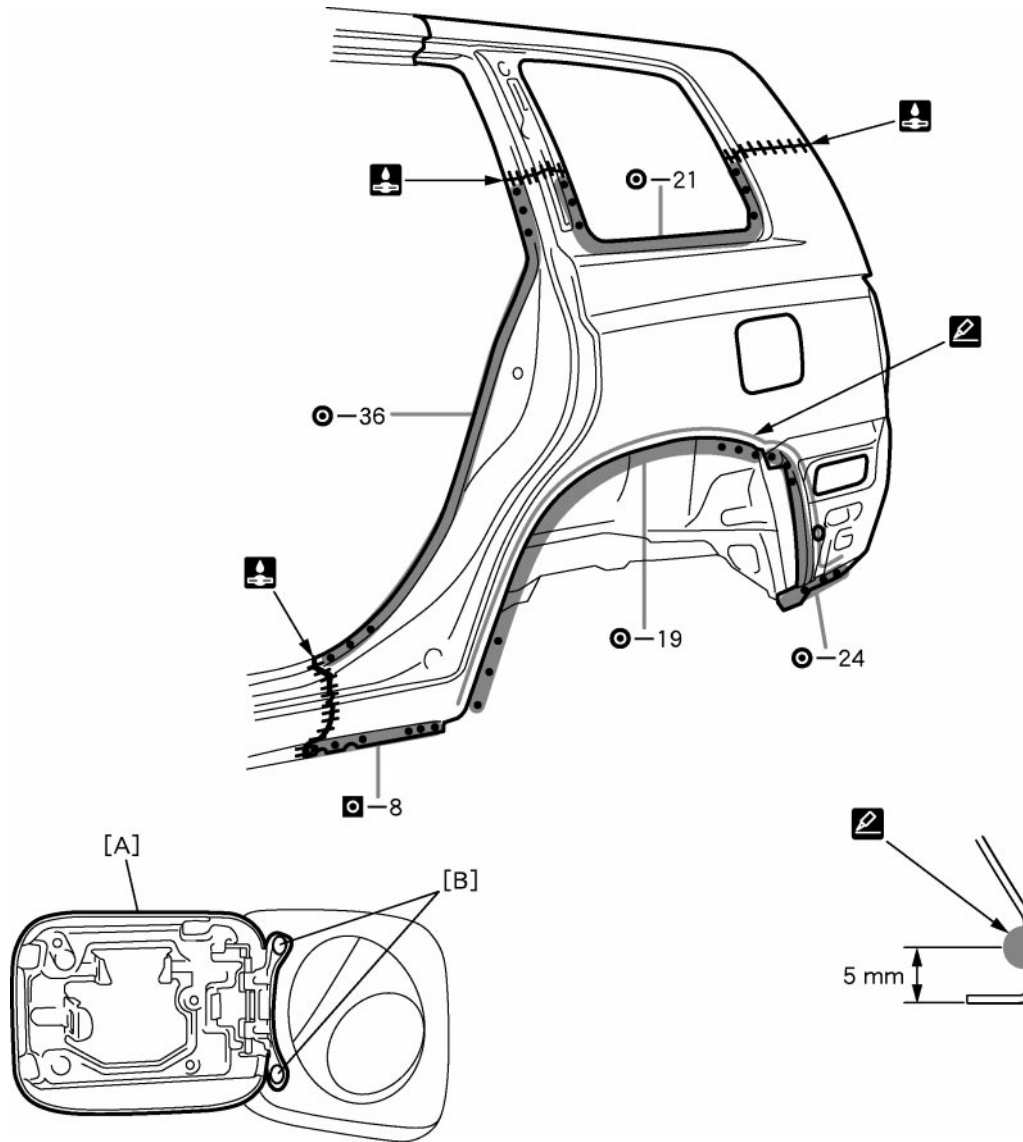
220 mm (8.66 in.)

240 mm (9.45 in.)



INSTALLATION

- Temporarily install the new parts and measure each part of the new parts in accordance with the body dimension diagram. (See the body dimension diagram)
- Inspect the fitting of the related parts around the new parts before welding. This affects the appearance of the finish.
- After welding, apply the polyurethane foam to the corresponding parts.
- After welding, apply body sealer and under-coating to the corresponding parts.
- After applying the top coat layer, apply anti-rust agent to the inside of the necked section structural weld spots.



F16774

POINT

- Before temporarily installing the new parts, apply body sealer to the wheel arch.
HINT:
 - 1) Apply body sealer about 5 mm (0.20 in.) from the flange, avoiding any oozing.
 - 2) Apply sealer evenly, about 3 - 4 mm (0.12 - 0.16 in.) in diameter.
- Inspect the fitting of the front door, luggage compartment door and rear combination light, etc., before welding, since this affects the appearance of the finish.

PART NAME

[A] Fuel Filler Opening Lid [B] Waterproof Rivets

