

REAR FLOOR PAN (CUT)

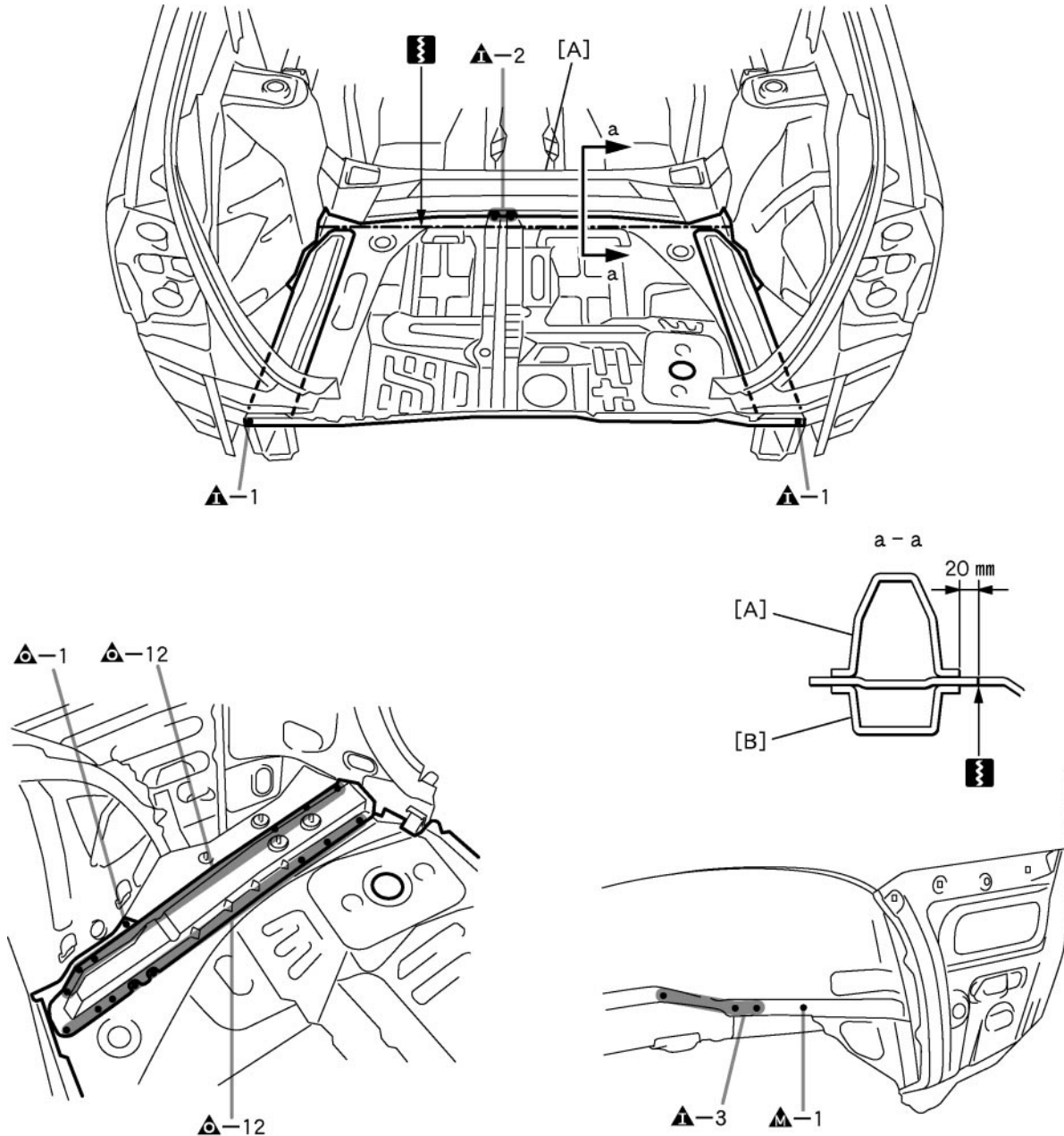
REPLACEMENT

With the body lower back panel removed.



F16717A

REMOVAL



F16717

PART NAME

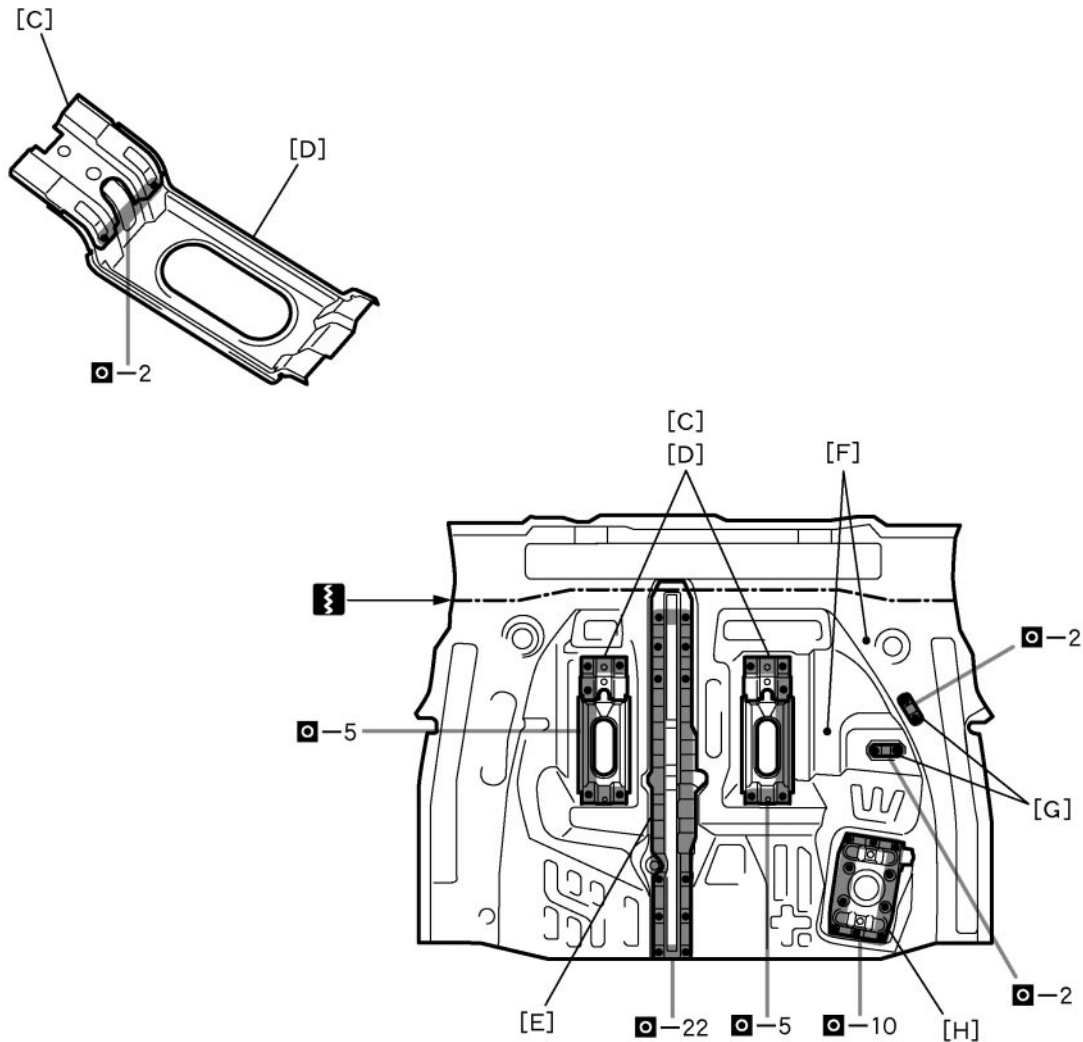
[A] Rear Floor Center Crossmember

[B] Rear Floor No.2 Crossmember

20 mm (0.79 in.)

INSTALLATION

- Temporarily install the new parts and measure each part of the new parts in accordance with the body dimension diagram. (See the body dimension diagram)
- Inspect the fitting of the related parts around the new parts before welding. This affects the appearance of the finish.
- After welding, apply the polyurethane foam to the corresponding parts.
- After welding, apply body sealer and under-coating to the corresponding parts.
- After applying the top coat layer, apply anti-rust agent to the inside of the necked section structural weld spots.



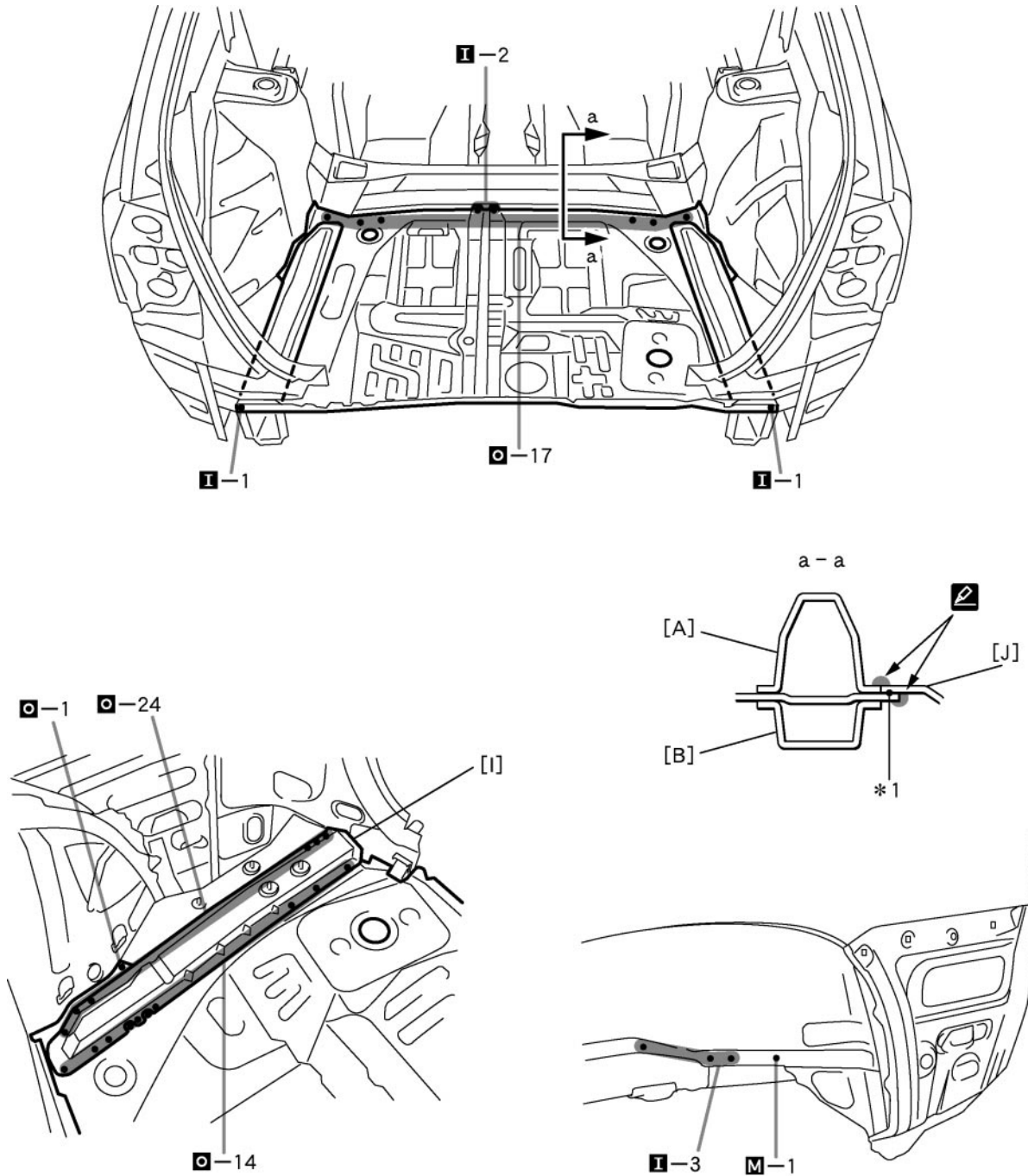
F12093

POINT

- 1 Cut the new part so that it overlaps the previous cut location by approximately 20 mm (0.79 in.).
- 2 Attach the weld bolt to center of the bearing surface.

PART NAME

- | | |
|--|--|
| [C] Rear Floor Side Panel Rear Extension | [D] Rear Floor Panel Extension |
| [E] Rear Floor Pan No.2 Extension | [F] Weld Bolt |
| [H] Spare Wheel Carrier Bracket | [G] Rear Floor Heat Insulator No.3 Bracket |



F16718

POINT

- 1 *1: Plug weld the overlapping portion of the [J].

HINT:

- 1) Be sure the portion to be welded are align and not loose.
 2 Coat the overlapping opening portion from the both sides with body sealer.

PART NAME

- | | |
|-----------------------------------|---------------------------------|
| [A] Rear Floor Center Crossmember | [B] Rear Floor No.2 Crossmember |
| [I] 3rd Seat Floor Side Panel | [J] New Part |